

FEATURES



1. Hour hand
2. Minute hand
3. Second hand
4. Day hand
5. 24h-hand
6. Date hand

CROWN

- N. Normal position
- F. First click position
- S. Second click position

HOW TO SET DATE AND DAY OF THE WEEK

F

Pull the crown out to the first click position F.

Date correction

Pull the crown out to the first position. Turn the crown counterclockwise to set the date

S

Pull the crown out to the first click position S.

Day correction

S. Pull the crown out to the second click position S. 24h-hand will follow Hour hand, the day hand advances to the next day

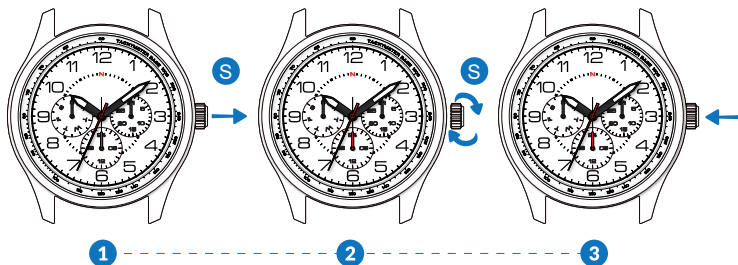
Note

- Do not set the date and the day hands between 9:00 p.m. and 4:00 a.m. Otherwise they may not move properly.

- While setting the date and the day hands, check that they move properly in one-day increments

- It is necessary to adjust the date on the first day after a 30-day month and February.

HOW TO SET TIME



1 Pull the crown out to the second position.

2 Turn the crown counterclockwise to set the time.

3 After the date has been set, push the crown back to the normal position.

Advance setting technique

- The 24-hour hand moves correspondingly with the hour hand.

- When setting the hour hand, check that the 24-hour hand is correctly set.

- When setting the minute hand, advance it 4 to 5 minutes ahead of the desired time and then turn it back to the exact time.