

Magic Dog Gate K522

Please read and retain these instructions for future reference

Instructions for Use

v001: 11/02/22



Dimensions

(H) 80 x (W) 100 x (D) 1.5cm

- THE MAGIC DOG GATE WILL ALLOW USERS TO HELP KEEP PETS CONTAINED. SIMPLY STICK TO DOOR FRAMES AND OFF YOU GO! DESIGNED WITH A MESH SCREENING SO YOUR PETS CAN STILL SEE YOU.

ASSEMBLY INSTRUCTIONS / INSTRUCTIONS FOR USE:

Unpack the components carefully. Please check all parts have been removed from the packaging.

Parts



15 inches X 2 PCS
(For Gate Vertical)



15 inches X 2 PCS
(For Gate Vertical)



Phillips Screws &
Wall-in Expansion Rubber Plugs x4



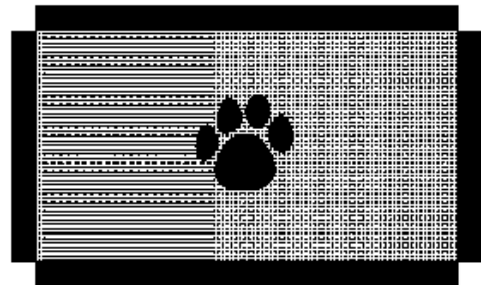
13 inches X 4 PCS
(For Gate Horizontal)



Lock Pipe Clips x4



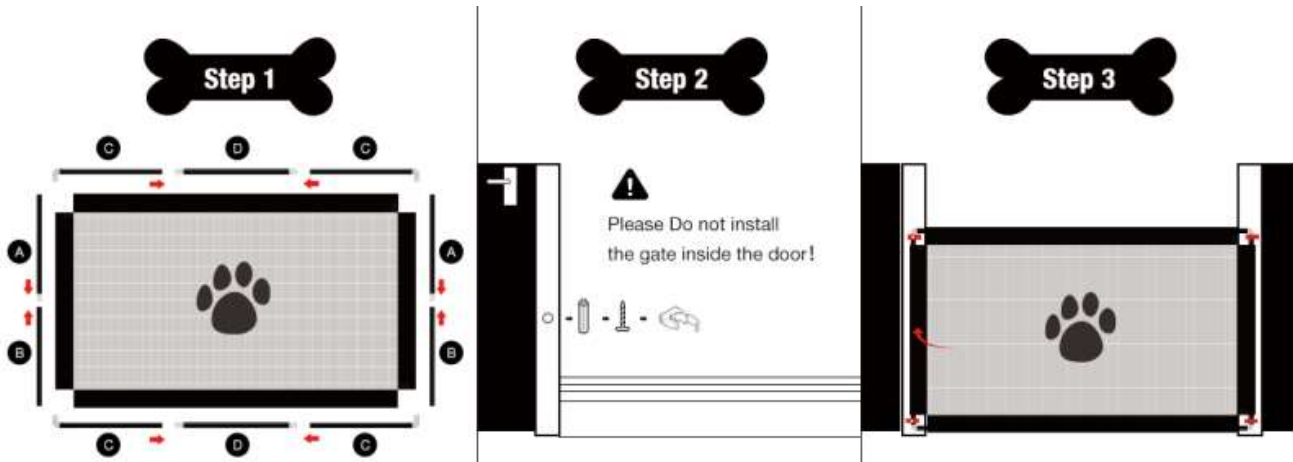
13 inches X 2 PCS
(For Gate Horizontal)



Screen x1

*Calls cost 7 pence per minute plus your telephone company's network access charge

The Enterprise Department
Head Office: 11 Bridge Street
Bishop's Stortford, CM23 2JU
Tel: 0844 482 4400*
Fax: 01279 756 595
www.coopersofstortford.co.uk




- Slot pipes together and put them into the screen tunnel.
- Fix the lock pipe clips in the wall with the screws provided, then put the gate into the lock pipe clips.
- Just open the lock pipe clips to open and close.

DISPOSAL

- Coopers of Stortford use recyclable or recycled packaging where possible.
- Please dispose of all packaging, paper, cartons, packaging in accordance with your local recycling regulations.
- Plastics, polybags – this is made from the following recyclable plastic.



Code & Symbol	 OTHER
Type of Plastic	ABS
Commonly used for	CD's, crisp packets, various flexible packaging, baby bottles, sunglass lenses
Notes	Not often or widely recycled

- At the end of the product's lifespan please check with your local council authorised household waste recycling centre for disposal.